

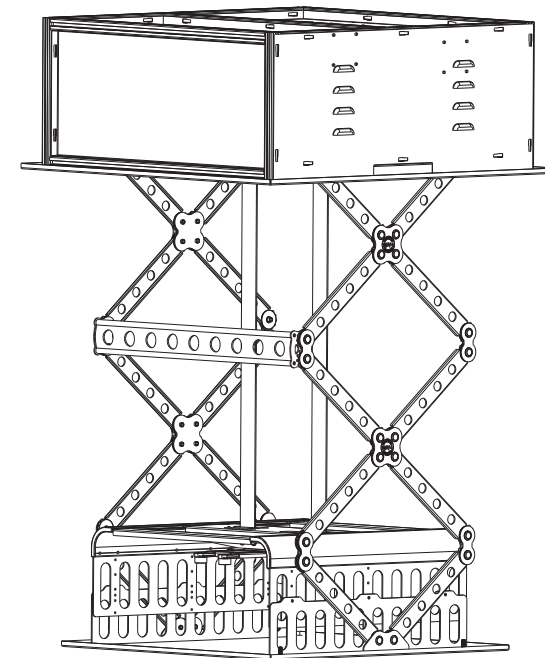
# Grandview

## Instruction Manual

### X – Arm Projector Lift

Grandview

Models  
GPSC-5005B  
GPSC-5010B  
GPSC-5015B



**Guangzhou Grandview Creative Technology Co., Ltd**

Add: No.1 Building of No.43 South International Trade Avenue,  
Hualong Town, Panyu District, Guangzhou China.

Tel: +8620-8489-9499 Fax: +8620-8480-5299

Http://www.grandviewscreen.com



Grandview

Thank you for purchasing this product. Before use, please ensure that the mounting bracket is suitable for your projector equipment and read this manual carefully.

## Important safety instructions

**WARNING: To reduce the risk of fire or electric shock, do not expose product to rain or moisture.**

- Please read this manual before installation and use to avoid damage to the product due to improper installation and use.
- Keep away from heat sources such as radiators, heaters, stoves and other equipment (including amplifiers).
- Only power plugs with grounded conductors may be connected.
- Only use accessories provided by the supplier.
- If you encounter lightning storms or if the product is not used for a long time, please unplug the power cord.
- Please leave it to professional service personnel for installation and maintenance.
- Never install the product in a humid or location where water may be splashed.
- This unit is not disconnected from AC power as long as the product plug is connected to the power source.
- Please use a power cord (3-core wire/device/connector/plug) that meets specific ratings (voltage, current). If the above power cord/device interface/plug, if you have any questions about its use, please consult professional maintenance personnel.
- Please use an approved power cord (3-core power cord)/device interface/plug, and its grounding plug should comply with applicable national safety regulations.
- When installing this equipment, provide an easily accessible disconnect device in the fixed wiring, or connect the mains plug to an electrical outlet that is close to the equipment and easily accessible. If a malfunction occurs while operating the device, the device can be disconnected by cutting power to the de-energized device power supply, or disconnect the power plug.
- The installation location must have sufficient mechanical strength, and the load-bearing requirement is 4 times the weight of the projector lift. Otherwise, an accident may occur or the lift may fall off.
- The ceiling cutting height must be greater than the product height; otherwise, it cannot be installed properly. Please ensure the ceiling installation height exceeds the product height by at least 100mm.



**Note:**

Objects other than projectors cannot be mounted.



**Disassembly prohibited:**

Please do not disassemble or disassemble the components of the mounting bracket.

This installation and operation manual is written for dealers and installation technicians. Customers are advised not to install it by themselves. They must hire qualified professional technicians to install and follow the installation instructions.

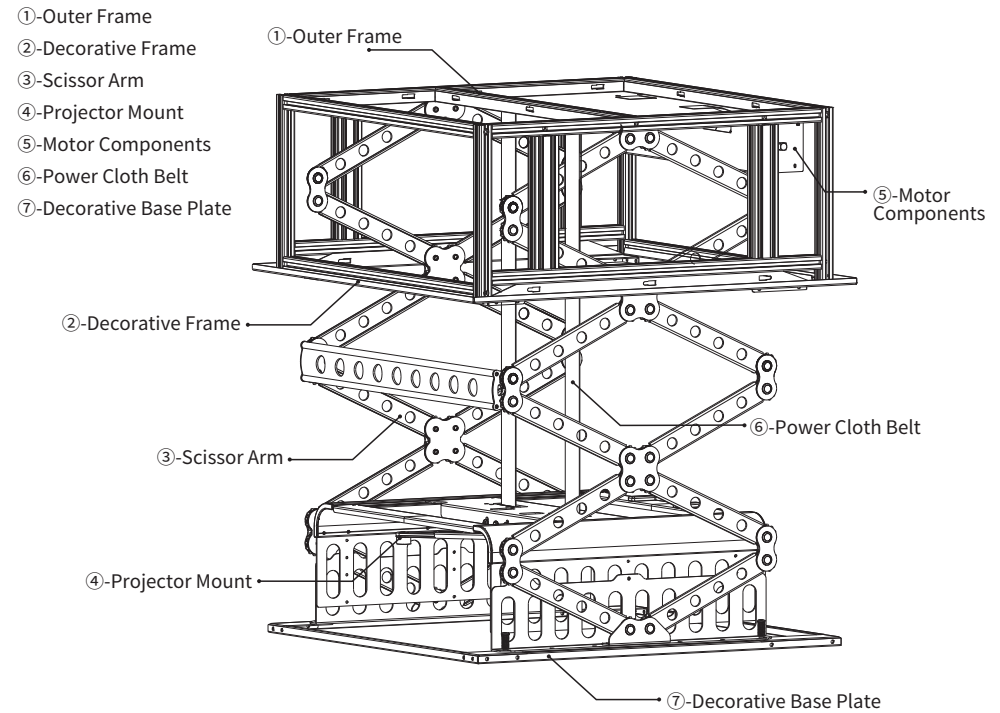
## Troubleshooting

The projector lift is designed to provide years of trouble-free use, and many problems arise due to simple little things. If you find an issue, check out the list of simple fixes below.

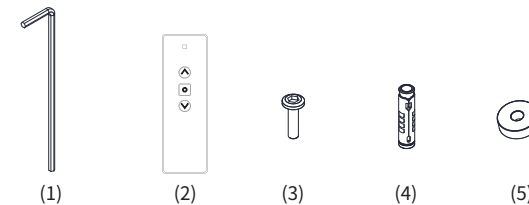
	Reasons	Solutions
Lift stand fully installed but not functioning properly	The positive and negative poles of the transmitter battery are reversed or the battery power is insufficient.	Refer to the instruction manual to check whether the battery is installed backwards. If the fault is not eliminated, replace the battery.
	The power cord is not connected properly	Refer to the instruction manual to connect the power cord and plug it in tightly.
Remote control does not respond	Poor reception/blocked signal	Restart the lift power
Restart the lift power	The rear signal line is blocked	Deal with the wire direction/adjust the lift position

## Parts

### GPSC-5005B Ultra-Thin Motorized Projector Lift



## Accessories



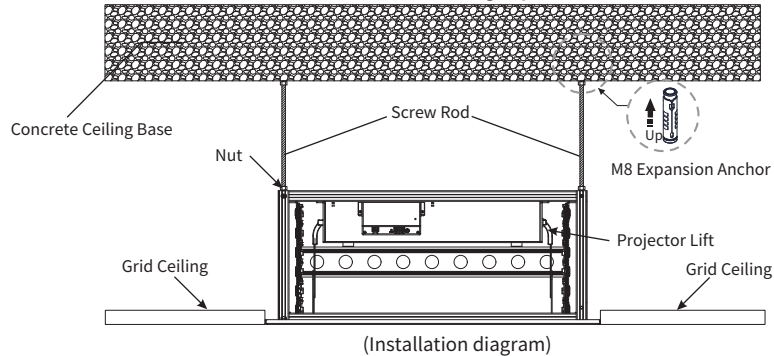
- |                               |                           |      |
|-------------------------------|---------------------------|------|
| (1) Allen Key 1pc             | (4) M8 Expansion Anchor   | 4pcs |
| (2) Remote Control 1pc        | (5) Mounting Spacer       | 4pcs |
| (3-1) M5x30 Socket Screw 4pcs | Certificate of Conformity | 1pc  |
| (3-2) M4x30 Socket Screw 4pcs | Warranty Card             | 1pc  |
| (3-3) M5x20 Socket Screw 4pcs | Instruction Manual        | 1pc  |
| (3-4) M4x20 Socket Screw 4pcs |                           |      |

# Installation

## Installation instructions

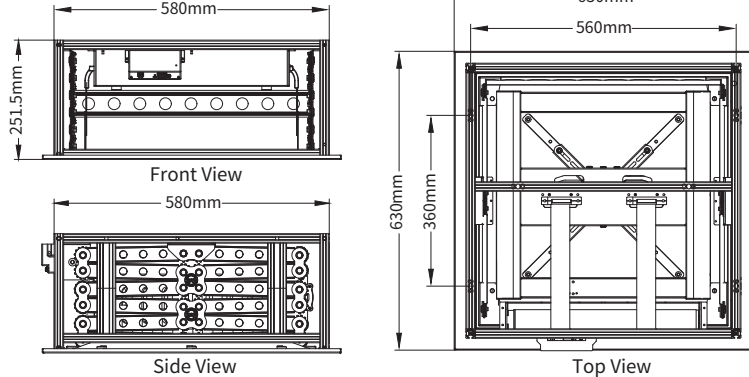
This product is suitable for installation in various suspended ceilings. This manual takes the installation method of the grille ceiling as an example. Please install it according to different installation environments. This product should be installed in the best projection position. Correct installation will make the product more convenient and safer during use. Open the packaging box, check whether the spare parts are complete, then take them out and put them in a suitable place for installation according to the following operation methods.

\* For the safety and convenience of the lift, please read the entire installation section of the instruction manual and choose the most suitable installation method according to your actual site conditions!



# Parameters

## Product Parameters:



Product Dimensions:W580xD580xH251.5mm  
 Max Projector Size (with plug and lens):W440x D480x H180 mm

Ceiling Opening Dimensions:600 x 600 mm  
 Installation hole distance: W560 x D360 mm  
 Decorative Base Plate:630x630 mm  
 Rated power:145W  
 Max Travel:500 mm  
 Weight capacity:15Kg

Rated voltage: AC110~120V / 60Hz or AC220V~240V / 50Hz

(Actual voltage shall be subject to the electrical label shown on the product)

Model	Name	Travel height range	Maximum load bearing capacity(KG)
GPSC-5005B	Single X node	500	15
GPSC-5010B	Double X node	1000	12
GPSC-5015B	Triple X node	1500	10

# Limit Setting

The upper/lower limit of your projector lift can be set/cleared via the remote control:

### 1. Electronic upper limit setting/clearing:

- Electronic upper limit setting: Once projector lift reaches your desired height, press both the "stop" and "up" buttons on your remote simultaneously. A long buzzer sound indicates the lift is in upper limit setting mode. Press both buttons again to hear a short beep, confirming the upper limit is set.
- Clearing the electronic upper limit: Move the lift to the set upper limit, then press and hold the "stop" button for 5 seconds until you hear a quick beep, indicating it's in clearing mode. Press the "stop" button again for 5 seconds; a long beep will confirm the upper limit has been cleared.

### 2. Electronic lower limit setting/clearing:

- Electronic lower limit setting: Lower the lift to your desired position, then press both the "stop" and "down" buttons on your remote simultaneously. A long beep will sound, putting the lift into lower limit setting mode. Press both buttons again to hear a short beep, which means the lower limit is successfully set.
- Clear the electronic lower limit: Adjust the lift to its lower limit, press and hold the "stop" button for 5 seconds until a quick beep sounds, indicating it's ready to clear. Pressing the "stop" button again for another 5 seconds will be followed by a long beep, signifying the successful clearing of the lower limit.

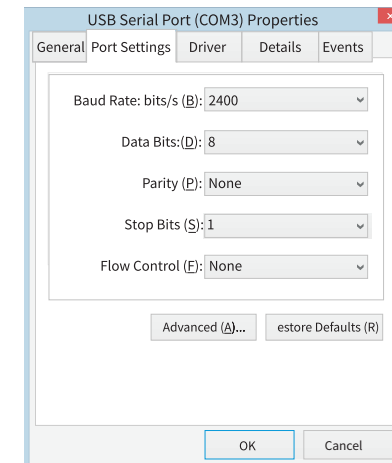
# RS-485 Protocol

## 1.RS-485 port settings

- Baud rate:2400
- Data length:8
- Parity check:N
- Start bi: 1
- Stop bit:1

## 2.Control code

- Rise command: FFAAEEEEDD
- Stop command: FFAAEEEECC
- Descending command:FFAAEEEEEE

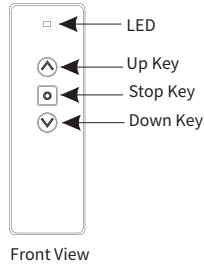


# Remote Functions Guide

## Remote Functions Guide

### Remote Functions

1. LED Indicator light: When a function key is pressed, the LED light will flash once.
2. Press the up button and the projector lift will rise.
3. Press the stop button to stop the projector lift.
4. Press the button to lower the projector lift.



### Precautions when using remote control

1. Working temperature: -20°C to ±70°C.
2. Transmitter battery: 1 CR2450 3v button battery.
3. When the signal from the remote control is weak, please replace the battery.

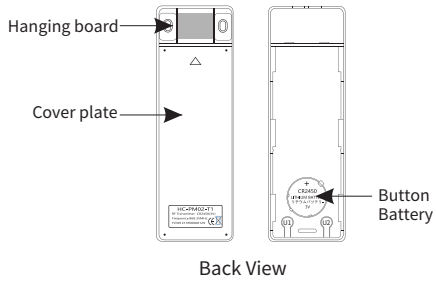
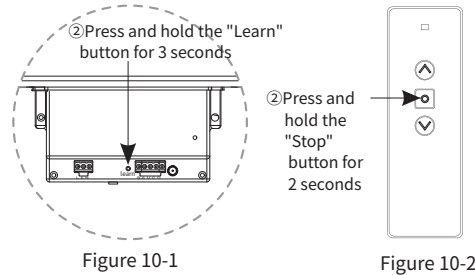
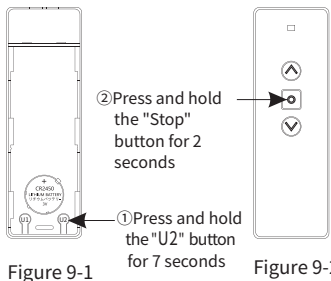
Remote control battery replacement and installation  
When the signal from the remote control is weak, please replace the battery as follows:

1. On the back of the remote control, remove the hanging plate, push upward in the ▲ direction, and take out the rear cover of the remote control.
2. Insert a small screwdriver into the square hole, tilt it down slightly, and remove the button battery.
3. Install the new battery, paying attention to the negative terminal of the button battery facing inward.
4. Place the rear cover ▲ and push it down into place. The battery replacement is completed.

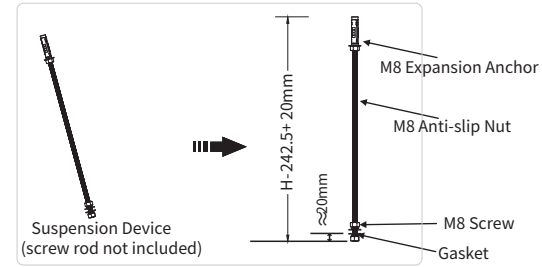
### Remote Pairing Instructions

This product is equipped with a remote pairing function, with the following methods: (It has been paired at the factory, and normally does not need to be re-paired.)

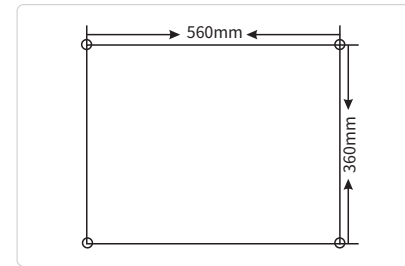
Method 1: Power off the lift, then power it on. Within 30 seconds, press the "U2" button on the unpaired remote for 7 seconds. The main board buzzer will sound slowly, entering the code learning mode. Then press the "Stop" button on the remote for 2 seconds. The main board buzzer will emit a long beep, indicating successful code learning. (As shown in Figures 9-1 and 9-2) Method 2: With the lift powered on, use a pin to press and hold the "Learn" button on the lift panel for 3 seconds. The main board buzzer will sound slowly, entering the code learning mode. Then press the "Stop" button on the remote for 2 seconds. The main board buzzer will emit a long beep, indicating successful code learning. (As shown in Figures 10-1 and 10-2)



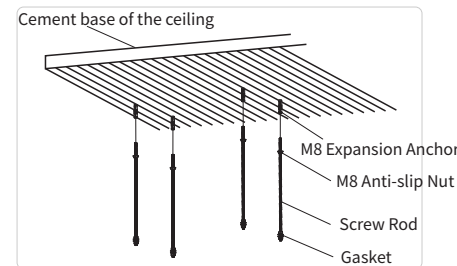
# Installation Steps



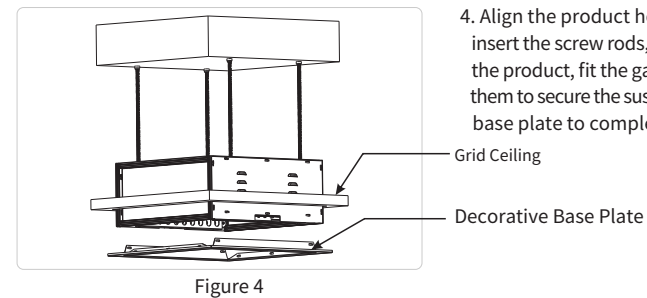
1. Assemble the suspension device using the M8 expansion anchor, screw rod (M8), and anti-slip nut (M8). Determine the screw rod height:  $H - 242.5 + 20\text{mm}$  H is the distance from the cement base to the grid ceiling; subtract the product height of 242.5mm from H and then add approximately 20mm for the height between the gasket and the nut to calculate the screw length.  
Note: The product does not come with the M8 anti-slip nut, M8 screw rod, and gasket as standard accessories. Customers need to prepare these themselves during installation.



2. After determining the screw rod length, choose the installation location (recommended to be on a cement base) and ensure that this location can support a weight of  $\geq 45\text{Kg}$ . Determine the ceiling installation hole position (560x360mm) based on product parameters, and use an impact drill to make holes with a recommended diameter of 12mm.



3. Following the sequence in Figure 3, insert the M8 expansion anchor into the hole in the cement base, then fit the M8 screw rod, anti-slip nuts, and gasket. Ensure that each part is securely tightened to prevent accidents.



4. Align the product holes with the screw rods, carefully insert the screw rods, and after the screw rods penetrate the product, fit the gaskets and anti-slip nuts and tighten them to secure the suspension. Finally, install the decorative base plate to complete the installation.

## Projector Orientation

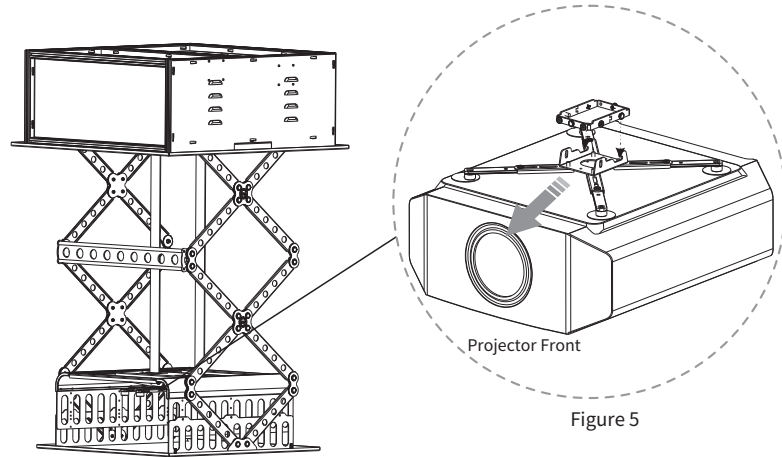


Figure 5

5. Secure the mount legs onto the projector, ensuring that the projector's orientation aligns with that of the lift; you can use an Allen key to loosen the screws on the mount legs and adjust their length for installation. After installing the projector onto the mount, hold it upwards so that the lift's rivet snaps into the universal joint (as shown in Figure 5). Once the projector's projection angle is adjusted, tighten the screws on both sides of the universal joint to secure it.

## Projector Angle Adjustment

### Vertical Adjustment of the Projector

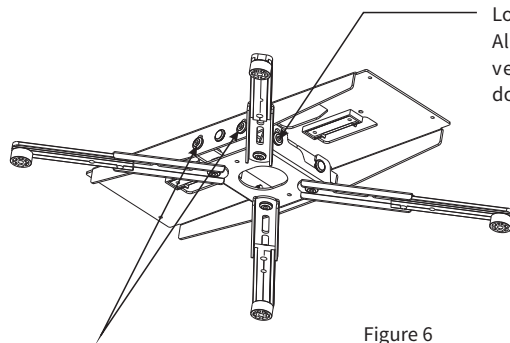


Figure 6

Loosen these two screws with an Allen key to adjust the projector vertically upwards by 1° and downwards by 8°.

### Horizontal Angle Adjustment of the Projector

Loosen these two screws with an Allen key to rotate the projector horizontally left and right by 4°.

## Projector Orientation

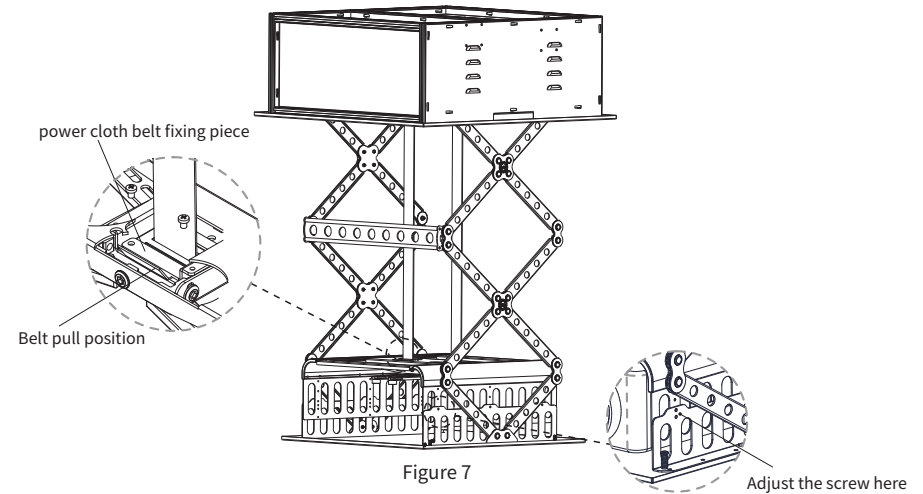
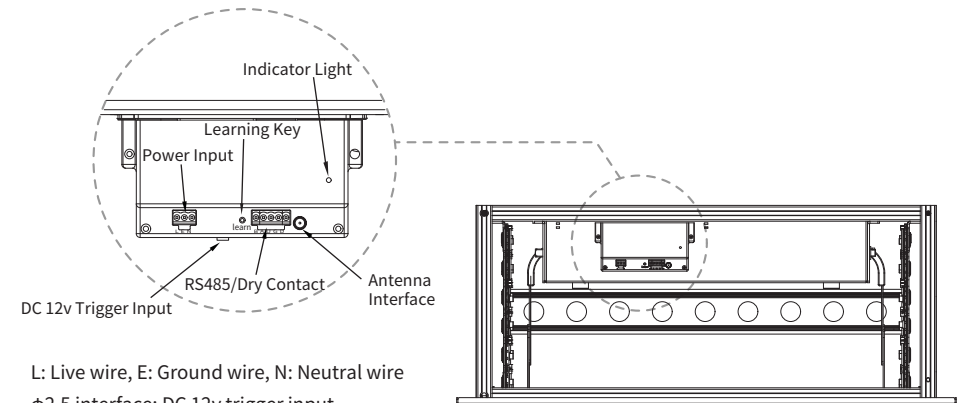


Figure 7

To adjust the height of the projector, you can loosen the screws in the fixing plate for the power cloth belt and pull the power cloth belt and reduce the height by which the projector descends (0mm-600mm). Additionally, when dealing with larger projectors, you can loosen the fixed screws on the cage, adjust to the appropriate height for the projector, and then tighten the screws in the new screw holes.

## Electrical and Installation Instructions

Connect the power cable and signal cable, as shown in Figure 8



L: Live wire, E: Ground wire, N: Neutral wire

φ2.5 interface: DC 12v trigger input

B: RS-485-, A: RS-485+

U: Up, G: public, D: Down

OOOnce G and U touch, the lift will rise; if they touch again, the lift will stop;

Touch G and D once and the lift will decent; touch again and the lift will stop;